

# ESTELITE® FLOW QUICK

Esthetic and Fast-Curing Flowable Composite Resin

Estelite® Flow Quick is a low viscosity (Medium Flow), light cured, submicron filled resin composite. Estelite® Flow Quick is designed for use with both anterior and posterior restorations. Estelite® Flow Quick adopts patented Radical Amplified Photopolymerization initiator technology (RAP technology) so curing time is diminished by 1/3. Estelite® Flow Quick contains 71% by weight (53% by volume) of silica-zirconia filler and silica-titania filler. Every inorganic filler contained in Estelite® Flow Quick is a spherical submicron filler (mean particle size: 0.3um, particle size range: 0.04 to 0.6um).



## Benefits

- Very Fast Curing
- Outstanding esthetics
- Superior mechanical strengths
- Excellent polishability
- Very low shrinkage
- Exceptional surface gloss
- Wider shade matching range / "Chameleon effect"
- Excellent handling
- Optimal radiopacity
- Minimum color change after curing
- More shade variations (17 shades)

## Indications

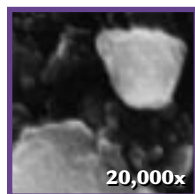
- Direct anterior and posterior restorations (particularly for small/shallow/tunnel shaped cavities)
- As the first layer of direct restorations
- Blocking out cavity undercuts before fabricating indirect restorations
- Repair of porcelain/composite

### CURING TIME

<b>Halogen</b>	5-10 sec.
<b>LED</b>	5**-10 sec. (*5 sec. with 900mW/cm2)
<b>Xenon</b>	3 sec.



Estelite® Flow Quick



Filtek™ Flow\*



Tetric® Flow\*



Revolution® Formula 2™\*\*

\*Not a registered trademark of Tokuyama Dental Corp.

# ESTELITE® FLOW QUICK

Esthetic and Fast-Curing Flowable Composite Resin

## Product Packages Available

### Estelite® Flow Quick Syringe Kit

- 3 Syringes (A2, A3 & A3.5) / 1.8g (1mL) each + 27 syringe tips

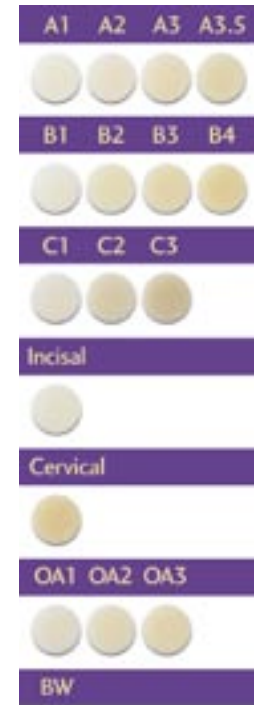


### Estelite® Flow Quick Syringe

- 1.8g (1mL)/syringe + 9 syringe tips

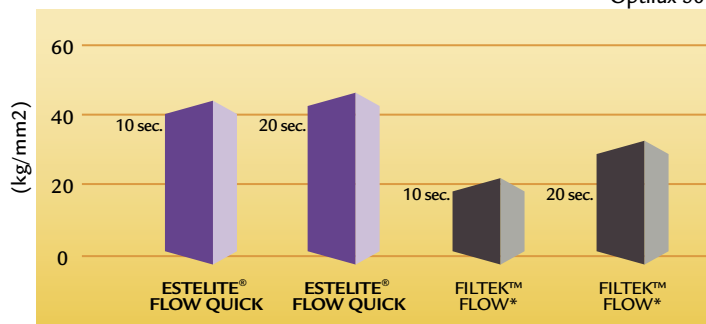
### Estelite® Flow Quick Syringe Tip

- 50 tips/box



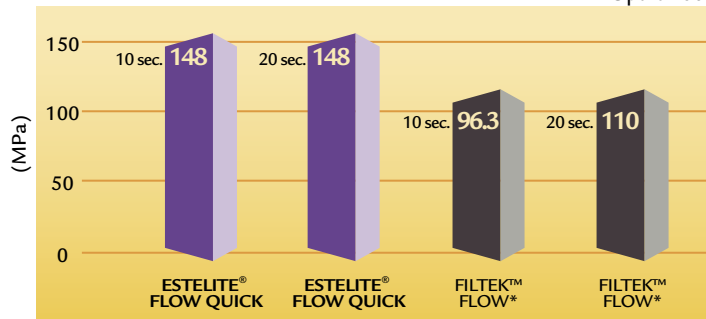
### Vickers Hardness\*\* (Light curing: 10 sec./20 sec.)

Optilux 501



### Flexural Strength\*\* (Light curing: 10 sec./20 sec.)

Optilux 501



\*\* Data from John M. Powers, PhD, University of Texas Dental Branch at Houston

### Light Curing Time\*\* (sec.)

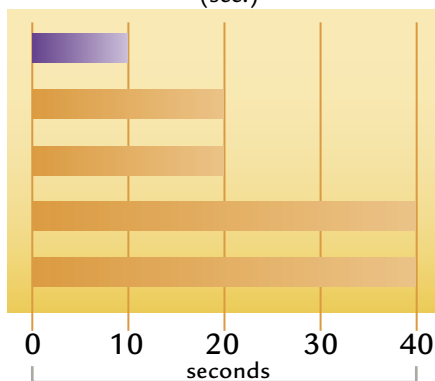
(sec.)

ESTELITE® FLOW QUICK  
(Any halogen)

TETRIC® FLOW\*  
(Astralis)

FILTEK™ FLOW\*  
(not mentioned)  
REVOLUTION® FORMULA 2\*  
(Optilux)

HELIOMOLAR® FLOW\*  
(Astralis)



Light curing time data collected from product instruction manuals.

Please refer to the Estelite® Flow Quick instruction manual for proper light curing times.

\*Not a registered trademark of Tokuyama Dental Corp.

ESTELITE® FLOW QUICK PRODUCTS	
ITEM#	ITEM DESCRIPTION
12505	Estelite® Flow Quick Syringe Kit
12573	Estelite® Flow Quick 2-Syringe Intro Pack (A2 & A3)
12511	Estelite® Flow Quick Syringe (Inc.)
12552	Estelite® Flow Quick Syringe (A1)
12553	Estelite® Flow Quick Syringe (A2)
12554	Estelite® Flow Quick Syringe (A3)
12555	Estelite® Flow Quick Syringe (A3.5)
12556	Estelite® Flow Quick Syringe (Cerv.)
12557	Estelite® Flow Quick Syringe (B1)
12558	Estelite® Flow Quick Syringe (B2)
12559	Estelite® Flow Quick Syringe (B3)
12560	Estelite® Flow Quick Syringe (B4)
12561	Estelite® Flow Quick Syringe (C1)
12562	Estelite® Flow Quick Syringe (C2)
12563	Estelite® Flow Quick Syringe (C3)
12564	Estelite® Flow Quick Syringe (OA1)
12565	Estelite® Flow Quick Syringe (OA2)
12566	Estelite® Flow Quick Syringe (OA3)
12567	Estelite® Flow Quick Syringe (BW)
12581	Estelite® Flow Quick Syringe Tip

For more information, please call 1.877.ESTELITE or visit [www.tokuyama-us.com](http://www.tokuyama-us.com)



Resin based Dental Restorative Material

# ESTELITE FLOW QUICK

# ESTELITE FLOW QUICK *High Flow*



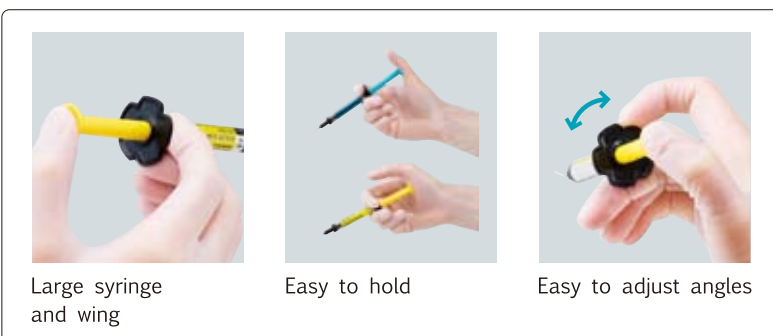
We have expanded our ESTELITE FLOW QUICK line to include a new flowability; ESTELITE FLOW QUICK High Flow. With two types of flowability, ESTELITE FLOW QUICK and ESTELITE FLOW QUICK High Flow strikes the perfect balance for the clinician who requires a range of flowability. By utilizing Tokuyama's patented innovative initiator system "Radical Amplified Photopolymerization (RAP) Technology", ESTELITE FLOW QUICK and ESTELITE FLOW QUICK High Flow offers the clinician a reduced curing time without compromising the working time, excellent esthetics and superior physical properties. With the addition of ESTELITE FLOW QUICK High Flow, Tokuyama has redesigned the syringe for easier dispensing with minimal waste.



## Benefits

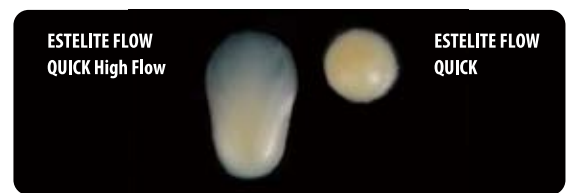
- Two types of flowability (High and Medium)
- New syringe design for easier dispensing with minimal waste
- Reliable physical properties
- Outstanding polishability, glossiness and color-matching
- Quick curing time, 10 seconds with a halogen light (>\_400mW/cm<sup>2</sup>)
- Sufficient working time, 90 seconds under an ambient light

## Easier Dispensing and Handling



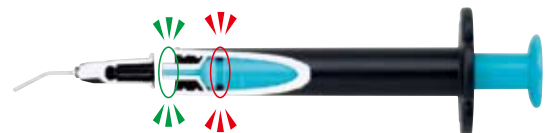
## Indications

- Direct anterior and posterior restorations
- Cavity lining
- Small / Shallow / Tunnel shaped cavities restorations
- Blocking out cavity undercuts before fabrication indirect restorations
- Repair of porcelain/composite (refer instruction)



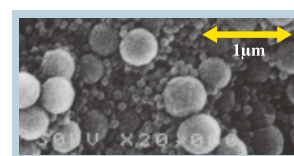
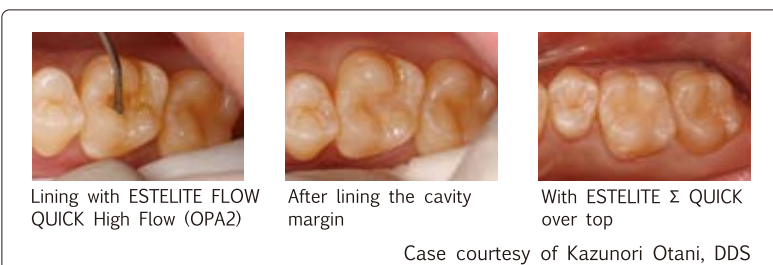
1 minute after vertical position(37°C)

Newly designed nozzle minimizes paste left in the syringe tip, reducing waste.



New gasket design prevents paste from leaking after dispensing.

## Posterior restorations with ESTELITE FLOW QUICK High Flow in OPA2.



400nm & 70nm controlled Spherical Fillers.

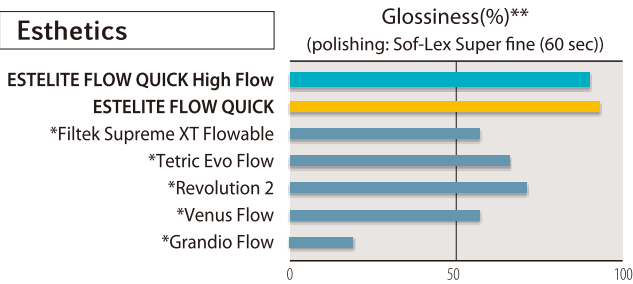


Good Radiopacity

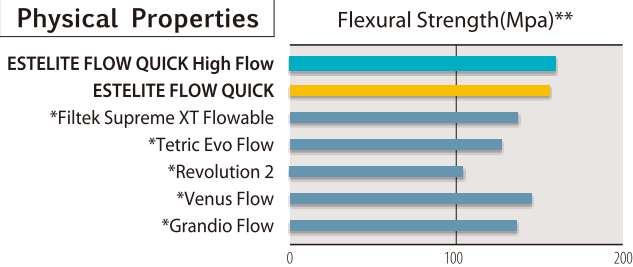
Case courtesy of Kazunori Otani, DDS

## Excellent Physical Properties

### Esthetics



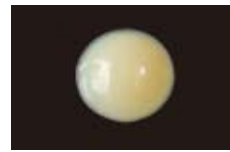
### Physical Properties



\*\* Source: Tokuyama Dental R&D

\* Not a registered trademark of Tokuyama Dental Corporation

### Excellent smoothness and glossiness



ESTELITE FLOW QUICK



ESTELITE FLOW QUICK High Flow

Surface wiped with alcohol gauze only, no polishing burs were used. Note the surface luster of the material without polishing.

Remark: Final polishing with burs shall be necessary. (refer instruction)

Physical Properties	ESTELITE FLOW QUICK	ESTELITE FLOW QUICK High Flow
Flexural Strength**	156 MPa	160 MPa
Compressive Strength**	391 MPa	458 MPa

Irradiation Time for polymerization (refer to instructions)	Halogen	800mW/cm <sup>2</sup>	5-10 sec.
	Plasma	950mW/cm <sup>2</sup>	3 sec.
	LED	900mW/cm <sup>2</sup>	5-10 sec.

## Product Packages Available

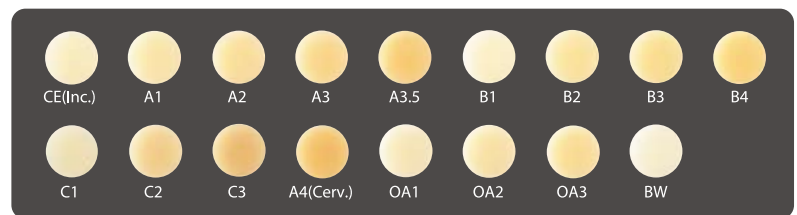


3.6g (2ml)  
each

### ESTELITE FLOW QUICK Syringe Refills

Contents: 1 syringe (3.6g), 15 tips

Available in 17 Shades: CE(Inc.), A1, A2, A3, A3.5, B1, B2, B3, B4, C1, C2, C3, A4(Cerv.), OA1, OA2, OA3, BW



### ESTELITE FLOW QUICK *High Flow* Syringe Refills

Contents: 1 syringe (3.6g) 15 tips

Available in 4 Shades: A1, A2, A3, OPA2



(a) OPA2 is designed for masking slight internal stain or reconstructing a highly opaque tooth.



Metal tips



Plastic tips

### ESTELITE FLOW QUICK tips

-Metal tips

-Plastic tips

Contents: Tip x 50 each

Limited availability of some products in certain areas. Contact your local dealer for availability.

Specifications are subject to change without obligation on the part of the Manufacturer.

Manufactured by  
**Tokuyama Dental Corporation**

38-9, Taitou 1-chome, Taitou-ku, Tokyo, Japan

TEL: +81-3-3835-2261 FAX: +81-3-3835-7224

Email: export@tokuyama-dental.co.jp

URL: www.tokuyama-dental.com

091201