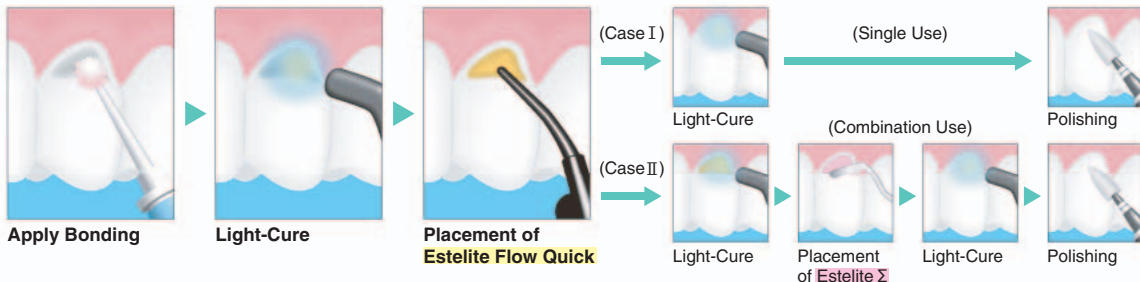


Clinical Procedure Guide for ESTELITE FLOW QUICK

Quick Curing Universal Flowable Composite Resin

- Read instruction before operation.
- Vor der ANwendung die Gebrauchsanweisung lesen.
- Leggere le istruzioni prima dell'uso.
- Veuillez vous référer au mode d'emploi avant utilisation.
- Lea las instrucciones antes del uso.
- Lees de aanwijzingen voor gebruik.



Curing time for Estelite Flow Quick

- Halogen 5-10 sec.
- LED* 5-10 sec.
*900mW/cm²
- Plasma Arc 3 sec.

Estelite Flow Quick

Available Shade Selection



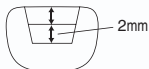
Follow bonding procedure according to the manufacturer's instructions.

We recommend Estelite Flow Quick to be used for the following clinical cases according to the Clinical Procedure Guide.

1 Quick incremental placement class I



Apply Bonding



2 mm incremental placement in 2 layers



2mm Incremental placement of Estelite Flow Quick with light-cure for 2 layers

Estelite Flow Quick ⇒ 10 sec. × 2 layers = 20 sec.
Other Flowable Composites ⇒ 30 sec. × 2 layers = 60 sec.

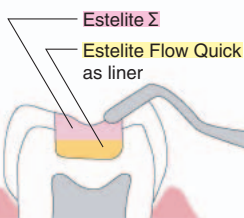


Finishing & Polishing

2 Securing Good Adaptation to Cavity Margins class I



Apply Bonding
Lining cavity floor with Estelite Flow Quick
⇒ Light-cure



Placement with Estelite Σ for fine Shaping & Sculpting



Light-cure
⇒ Polishing

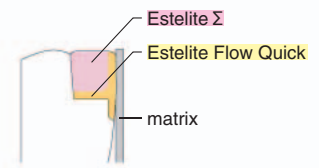
3 Easy matrix application class II



Position matrix
⇒ Apply Bonding



Placement of Estelite Flow Quick to make a partition along the matrix
⇒ Light-cure



Placement of Estelite Σ
⇒ Light-cure
⇒ Polishing

4 Smooth filling class III



Apply Bonding
Position matrix and making a pin hole



Placement of Estelite Flow Quick (OA)
⇒ Light-cure



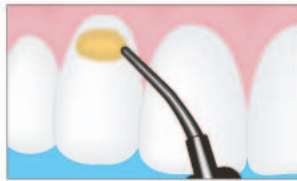
Finishing & Polishing

OA(opalescent) shades are for blockingout the dark shine coming through the oral cavity.
A- Shade is transparent. > OA- Shade is opalescent.

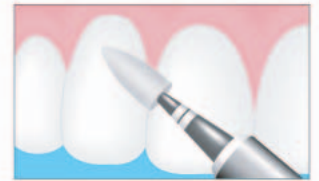
5 Suitable modulus of elasticity for Class V's class V



Apply Bonding



Incremental Placement of Estelite Flow Quick
⇒ Light-cure



Finishing & Polishing

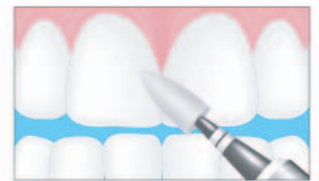
6 Midline Diastema Closure Technique



Preparing enamel surface
⇒ Apply Bonding



Placement of Estelite Σ on incisal third
⇒ Light-cure
⇒ Placement of Estelite Flow Quick (OA) in increments along the gingival 2/3rds
⇒ Light-cure



Finishing & Polishing